



*The Alliance for Regional Collaboration to Heighten Educational Success (ARCHES) is a voluntary confederation of collaboratives focused on improving student outcomes and closing the achievement gap through collective action among schools, community colleges, baccalaureate-granting colleges and universities, business, and community and family-centered organizations.*

## **IMPERIAL COUNTY P-16 COUNCIL**

### **History**

Begun in 2003 with a grant from the National Council for Community and Education Partnerships, the Imperial County P-16 Council was formed under the auspices of the Imperial County Office of Education. This community partnership provides leadership and support to change this area's culture such that college attendance becomes an expectation rather than an exception. In addition to increasing college eligibility, acceptance, and attendance rates, this Council is focused on increasing student achievement in mathematics and science.

As this P-16 Council has matured, evidence of progress has been apparent in terms of:

- actions focused at key transition points in the educational process for students and parents;
- receipt of a GEAR UP Partnership Grant in 2006;
- establishment of a Business Committee to raise funds for programs and scholarships;
- consistent use of data for decision-making; and,
- successful transition in leadership of the Council.

### **Membership**

The Imperial County Office of Education, all 16 school county districts, Imperial Valley College, the Imperial County Partnership for Higher Education, San Diego State University-Imperial Valley Campus, several businesses, governmental agencies, and community-based organizations are current members of this Council. Among other measures of progress, the membership on this Council has grown and become more inclusive since its inception.

### **Demographics**

Located adjacent to the Mexican Border and stretching from San Diego County to Arizona, Imperial County is primarily an agricultural area. The county's median income and employment levels are far below the state average. Approximately 88 percent of the over 36,000 students attending school in this county are from Latino families.

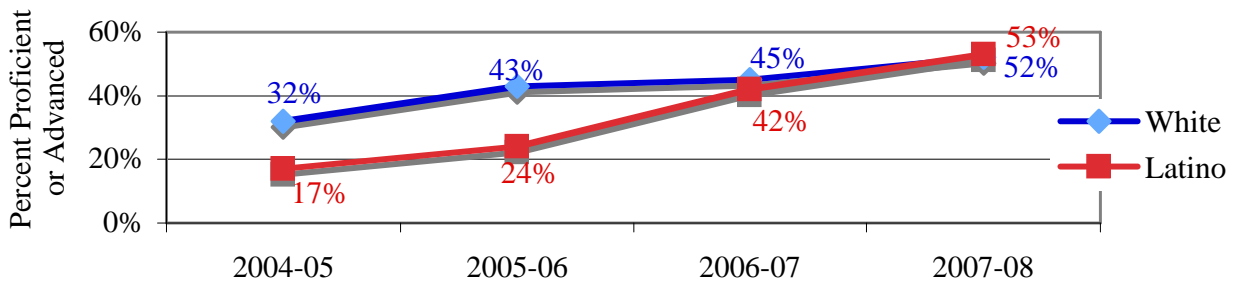
### **Impact**

In 2006, ARCHES-ENLACE awarded a grant to the Imperial County Office of Education to support this Council's initiative to increase enrollment and proficiency in Algebra I. A corollary goal was that the gap in enrollment and achievement in Algebra between Latino students and their classmates would be narrowed. Display 1 on the next page presents information on the proportion of students scoring at the Proficient or Advanced Level in Algebra I on the California Standards Tests in Imperial County from 2004-05 through 2007-08.

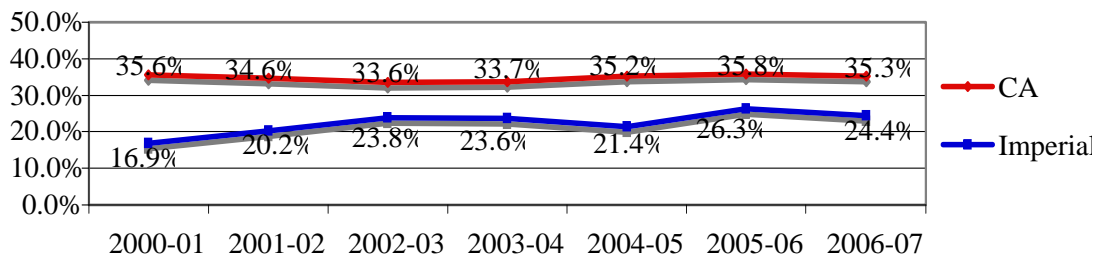
- The proportion of Latino eighth graders scoring at the Proficient or Advanced levels on the California Standards Test increased from 17 percent in 2004-05 to 52 percent in 2007-08.
- The proportion of White eighth graders scoring at these levels rose from 32 to 53 percent.
- In essence, no gap now exists between Latino and White students on the Algebra I test.

This Council has addressed its primary goal of increasing the college eligibility, acceptance, and enrollment rates of high school graduates. Display 2 on the next page presents information on the proportion of Imperial County high school graduates who completed the college preparatory course sequence required for admission to California's public universities.

Display 1  
Percent of Eighth Graders Proficient or Above on the California Standards Test in Algebra



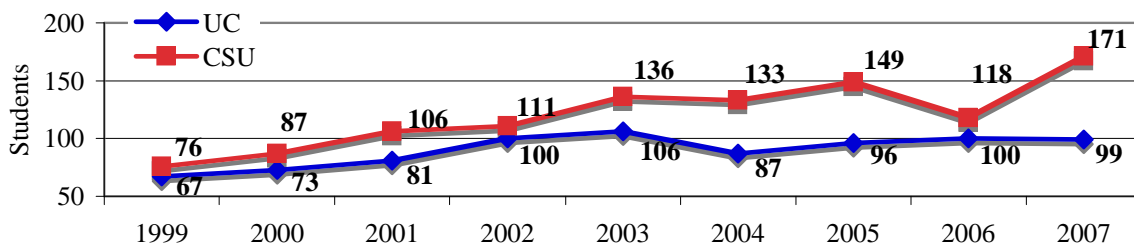
Display 2  
Percentage of High School Graduates Completing the College Preparatory Course Pattern



- The percentage of this county’s high school graduates completing the college preparatory course sequence grew fairly consistently through 2005-06, with a small decline in 2006-07.
- The gap between Imperial County students completing this course pattern and their classmates statewide has narrowed from 19 percent in 2000-01 to nine percent in 2005-06.

Display 3 pictures the number of students enrolled in the state’s public universities over time as a measure of this collaborative’s progress.

Display 3  
Number of Imperial County Students Enrolling in California Public Universities, 2000-2007



- From 2000 to 2007, 69 percent more students in this County enrolled in public universities.
- Enrollment in the California State University increased by nearly 97 percent during this time period and by 36 percent at the University of California.

**Current Initiatives**

- Expand the Summer Algebra Academies for entering ninth graders to College Readiness Academies in Pre-Algebra for entering eighth graders.
- Offer SAT Preparation sessions to all high schools.
- Leverage community resources to support scholarships for low-income college students.